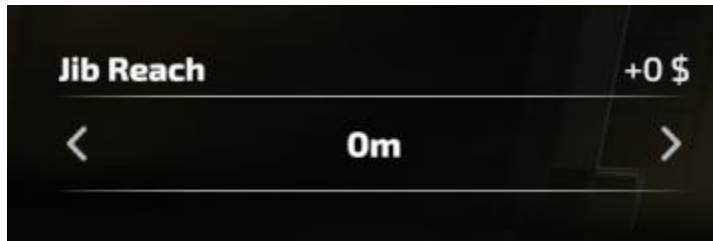
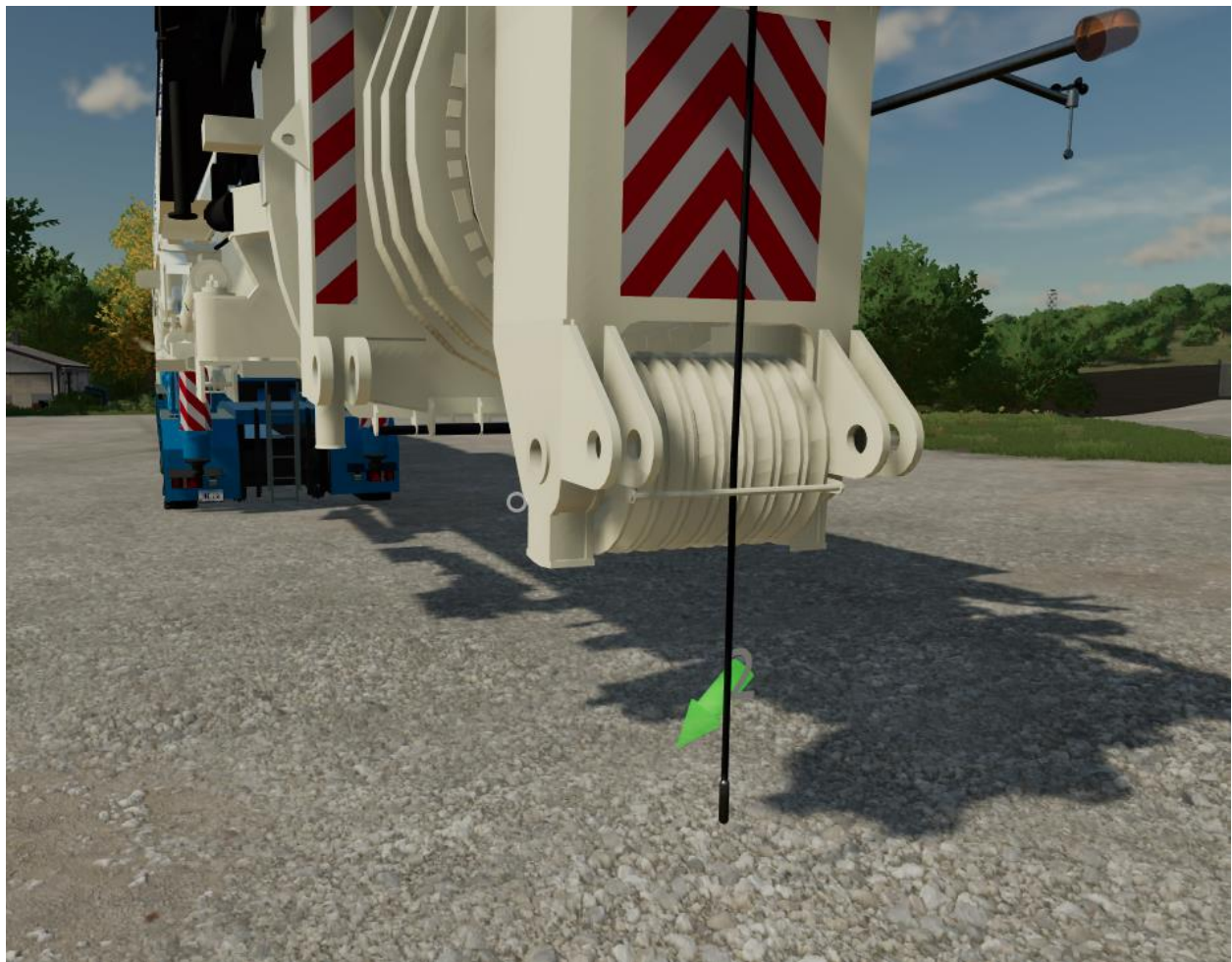


Boom info to know:

If just using the telescoping sections, the Hydraulic Jib or Luffing Jib reach must be set to 0m to get the correct placement of the hook cables



Unfold any boom to show the cables



The hook must be attached with the boom as close to the hook as possible (similar to how a true hook is reaved up). Match up the lower arrow on the hook, with the arrow on the boom. Upper arrow is for

lifting the hook with another hook.



Controlling the Crane:

Notice Cabin Position and other Simple IC Animated Parts don't save position
(Simple IC Issue)

Carrier

Control group 1 Crane



-axes raise/lower - AXIS_CRANE_SUPPORT Keyboard Lctrl + a/d



Crab steering - AXIS_CRANE_ARM2 keyboard j/n (you must recenter the normal steering for the crab steering to work correctly).

Control group 2 Crane



-slew (turn) crane - AXIS_CRANE_ARM keyboard key k/m (will work from boom as long as attachment does not have control conflict)

-raise/lower lift cylinders - AXIS_CRANE_ARM2 keyboard j/n

-ballast plate raise/lower - AXIS_CRANE_SUPPORT keyboard lctrl + a/d

-fold - keyboard x

(this will bring the crane cab into operating position from the transport position if you do not want to use simple ic and set the outriggers to extended position. you will still need to lower them)

-steering modes

Control group 3 front outriggers



- rotate left front outrigger - AXIS_CRANE_ARM2 keyboard j/n
- rotate right front outrigger - AXIS_CRANE_ARM keyboard k/m
- extend left front outrigger - AXIS_CRANE_ARM3 keyboard lshift + j/n
- extend right front outrigger - AXIS_CRANE_ARM4 keyboard lshift + k/m
- lower left front outrigger - AXIS_CRANE_TOOL2 keyboard lshift + lctrl + j/n
- lower right front outrigger - AXIS_CRANE_TOOL3 keyboard lshift + lctrl + k/m

Control group 4 rear outriggers



- rotate left rear outrigger - AXIS_CRANE_ARM2 keyboard j/n
- rotate right rear outrigger - AXIS_CRANE_ARM keyboard k/m
- extend left rear outrigger - AXIS_CRANE_ARM3 keyboard lshift + j/n
- extend right rear outrigger - AXIS_CRANE_ARM4 keyboard lshift + k/m
- lower left rear outrigger - AXIS_CRANE_TOOL2 keyboard lshift + lctrl + j/n
- lower right rear outrigger - AXIS_CRANE_TOOL3 keyboard lshift + lctrl + k/m

T3/T7 Boom controls

- fold (hide/unhide cables and/or lattice if configured) - keyboard x

control group 1

- raise/lower y-guy brace - AXIS_FRONTLOADER_TOOL3 keyboard lshift + j/n
- spread/crowd y-guy brace - AXIS_FRONTLOADER_TOOL4 keyboard lshift + k/m

control group 2

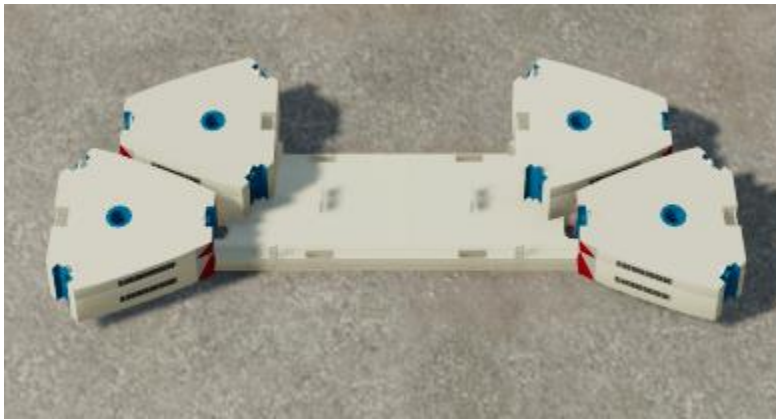
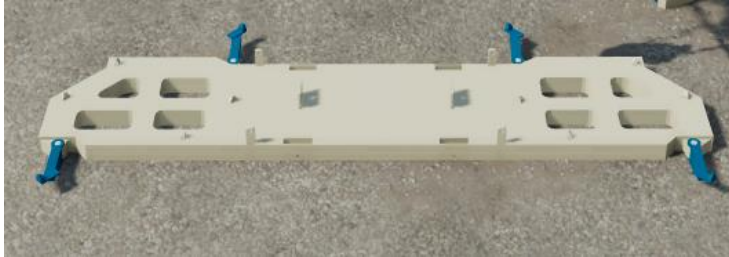
- raise boom - AXIS_CRANE_ARM2 keyboard j/n
- extend/retract telescoping sections - AXIS_CRANE_ARM3 keyboard lshift + j/n
- tilt hydraulic jib/luffing jib down/up - AXIS_CRANE_ARM4 keyboard lshift + k/m

-lower hook - AXIS_CRANE_TOOL keyboard lctrl + k/m

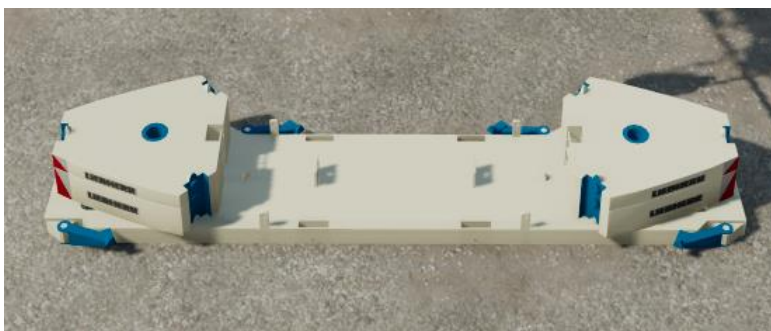
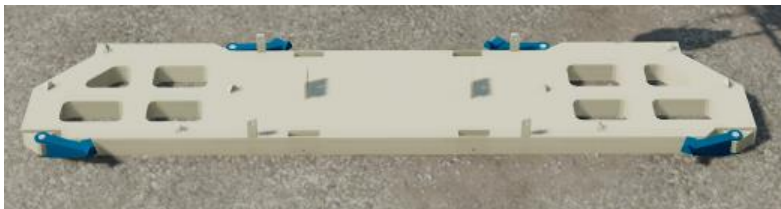
Ballast Plate

- fold folds weight arms and makes ballast plate have two attachers to stack two weight towers/columns. Unfolded can have four stacks/towers/columns of weight

Four Stack, unfolded:



Two stack folded:



- if you fold it, the attacher joints will flip without the weights moving until you reload the game. Then the weights will have moved and will look wierd.

Ballast

- on fold the attacher joint rotates so you can disconnect the weights when you detach a weight on top of it. Just remember to unfold it once the weight above is removed.

3, 7, and 13 sheave hooks

- fold to rotate hook down or up



Hooks and Booms

- 13 sheave hook only works with T3 boom with Reach set to 0m
- 7 sheave hook works with All options of T7 boom and with the T3 boom out to a reach of 90m
- 12 and 14 lines on the 7 sheave hook will only work when Jib reach is set to 0m
- single sheave hook and 3 sheave hook work out to 126m. Though max lines is 4 when out that far
- You must match the number of lines on the boom and the hook in order for it to attach